

NAV Manufacturing

Enterprise Resource Planning

Kim Ngan Duong

The assignment requirement follows in this file.

REPORT

My product

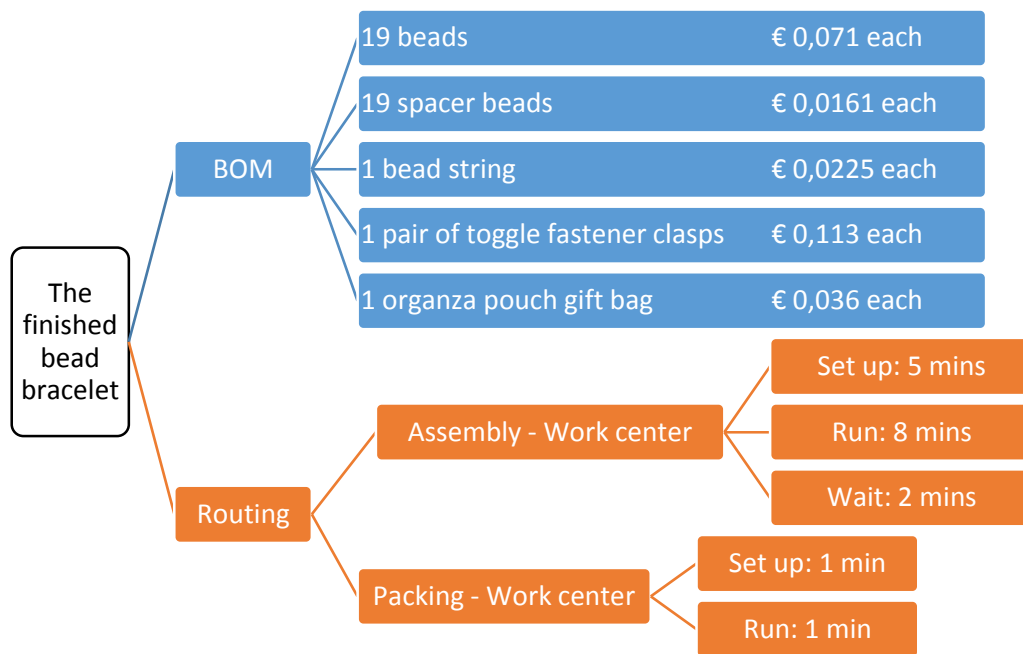
19cm bead bracelets with 2 colors mixed: white and royal blue

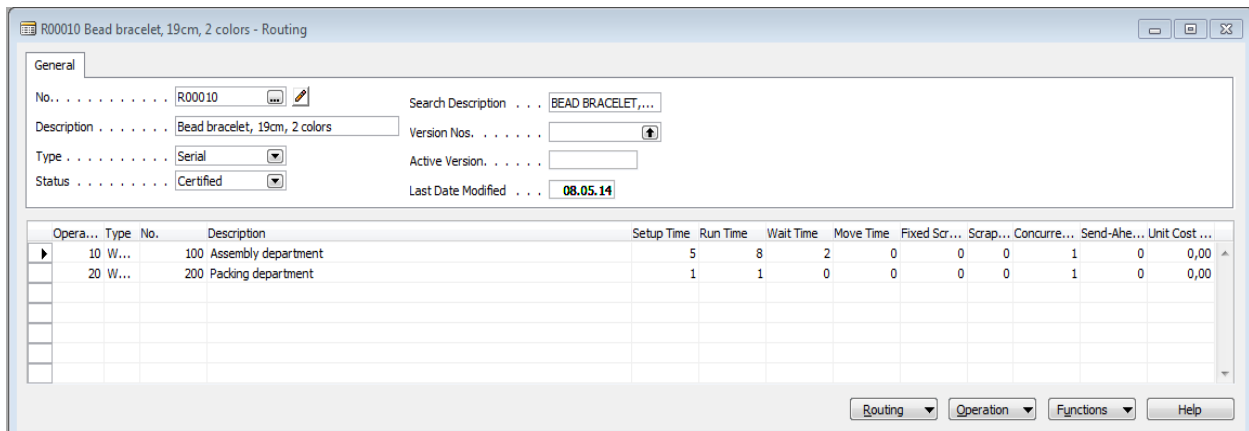
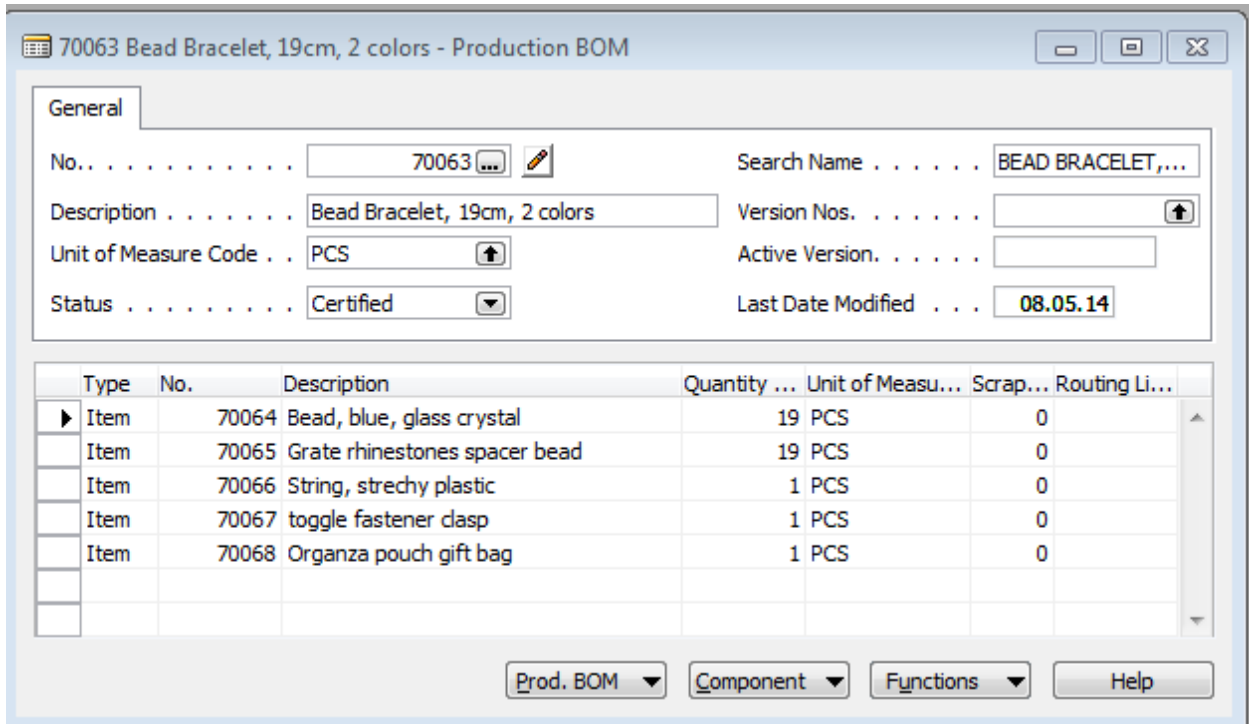
Raw materials

| Beads | Spacer beads | Bead string | Organza pouch gift bag | Toggle fastener clasps |
|---|---|--|------------------------------|------------------------|
| Faceted square cube cut Glass crystal Royal blue 19 pieces | Grate rhinestone White 19 pieces | Stretchy, 0,8cm Plastic White 25,4 cm | Ivory 10x12 cm 1 piece | Silver 1 pair |
| Unit cost | | | | |
| € 0,071 | € 0,0161 | € 0,0225 | € 0,036 | € 0,113 |
| Cost | | | | |
| € 1,349 (€ 0,071*19) | € 0,3059 | € 0,0225 | € 0,036 | € 0,113 |
| Total cost of components: € 1,8264 | | | | |

The company don't manufacture these ingredients.

The finished product is a kind of craft, so it is made by hand in the factory. 19 beads and 19 spacer beads are strung on a string, and a pair of clasps are used to finish off the bracelet. It takes around 8 minutes for this process. After the assembly phase, each bracelet is put into one small bag (also by hand). The run time is 1 min. Below is the plan:





What do the working minutes consist of?

Total time consists of setup, run time, and wait and move time.

How does it calculate the Routing?

Setup time is calculated per production order and run time is calculated per produced item. Standard time rates in work center were established beforehand.

Calculate the Standard cost for your Main Item. Enter a 38% profit. Take a screenshot of the Item window's Invoicing card.

Standard cost = cost of the components purchased found in BOM + labor cost based on labor time in Routing

Manufacturing in Cronus International

70063 Bead Bracelet 19cm, 2 colors - Item Card

General Invoicing Replenishment Planning Foreign Trade Item Tracking E - Commerce Warehouse

| | | | |
|-----------------------------|-----------------|----------------------------|-------------------------------------|
| Costing Method | Standard | Gen. Prod. Posting Group | RETAIL |
| Average Cost (LCY) . . . | 0,00 | VAT Prod. Posting Group. | VAT25 |
| Standard Cost | 20,4264 | Inventory Posting Group. | FINISHED |
| Unit Cost | 20,4264 | Net Invoiced Qty. | 0 |
| Overhead Rate | 0,00 | Allow Invoice Disc. . . . | <input checked="" type="checkbox"/> |
| Indirect Cost % | 0 | Item Disc. Group | |
| Last Direct Cost | 0,00 | Sales Unit of Measure . . | PCS |
| Price/Profit Calculation. . | Price=Cost+P... | | |
| Profit % | 38 | | |
| Unit Price | 32,94581 | | |

Item Sales Purchases Functions Help

ASSIGNMENT

Create your own manufacturing item

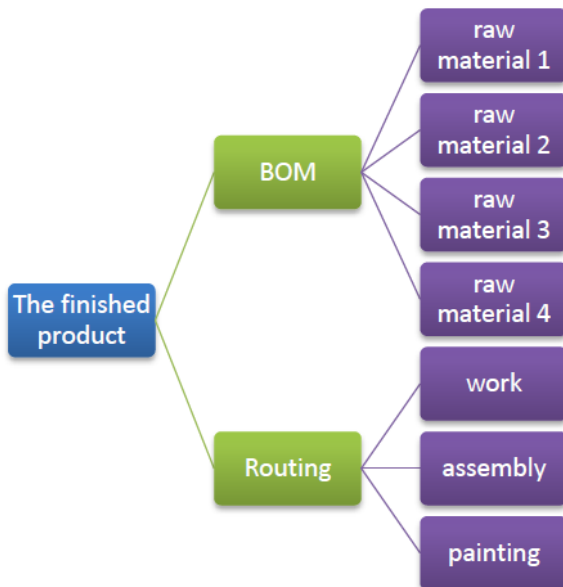
Introduction

Your assignment is to **plan the production of an item**. Use your imagination and think of a product you would like to manufacture and enter in to Microsoft NAV. Make sure the product is simple, it should consist of 4-10 parts. It can be anything from a piece of furniture or a toy. You choose.

Open a new empty Word document. Write a short story about the product is and how it will be manufactured in your factory. List all of the parts (raw material) and what they cost. Create a plan on how many minutes every step of the manufacturing process will take. You can even draw pictures to visualize it.

Open NAV and start entering the parts as RAW Material and their Unit Costs. Create the main item also. Create a BOM and routing according to what you have learned earlier. (See chapter 6).

For example:



Calculate the Standard cost for your Main Item. Enter a 38% profit.

Figure out how the Standard Cost is calculated. Use Excel to help you. How does it calculate the Routing? What do the working minutes consist of?

Take a screenshot of the Item window's Invoicing card.

In windows 7, there is a handy program called the Snipping tool

Upload your Word file to Itslearning before the dead-line.